

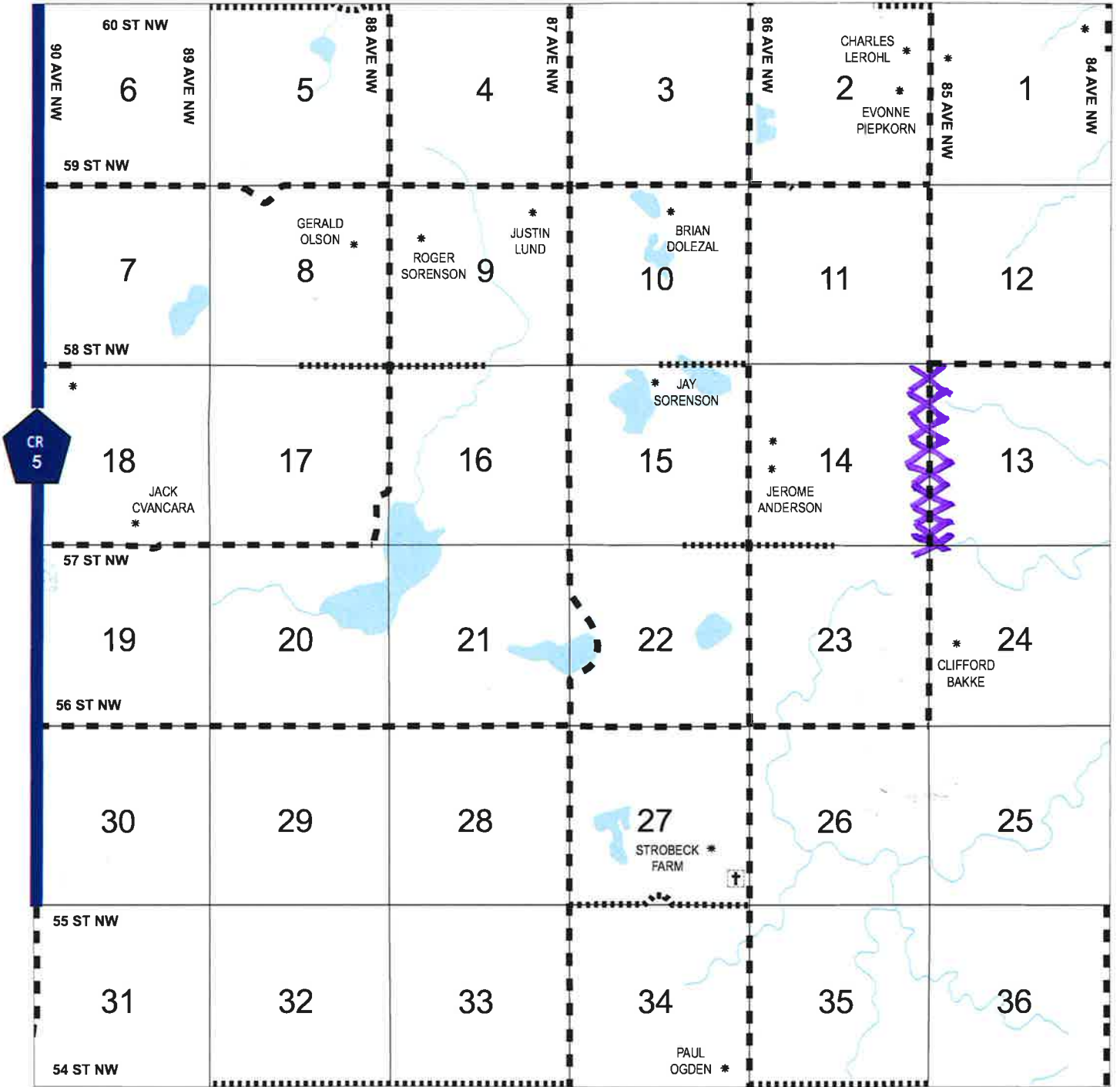
8/19/2019

ALGER DIRECTORY

T-155-N

CODE: AA

R-92-W



- State Highways
- County Paved Roads
- County Gravel Roads
- Certified Township Miles
- 100% Certified by Bordering Township

ROAD RESTRICTED TO 12,000 LBS GVW DUE TO CULVERT FAILURE

	R94W	R93W	R92W	R91W	R90W	R89W	R88W
T157N	AD	BJ	BI	AU	BQ	AK	AV
T156N	BX	BS	AI	AQ	AH	BM	BU
T155N	BB	AW	BN	AP	BF	AY	AM
T154N	BY	AL	AA	BK	AG	AX	AR
T153N	BZ	BL	AF	BR	AB	BC	BE
T152N	CA	AS	AJ	BW	BP	BT	
T151N	BO	BD	BV	BG	AZ	BH	
T150N	AE	AO	AT	AN	AC	BA	
	CB	CC					

Copyright Permission Granted for Mountrail County
By
Great Plains Directory Service
(701)251-1612
www.greatplainsdirectoryservice.com