

GIS ROUTABLE MAP -QUICK GUIDE

From the Route Page of your permit select +Add GIS route

Trip Permit

Company Load Axles > Route < Review

Permit # D 395476 Status Draft

[« Back](#) [Next »](#)

[+ Add GIS Route](#) [+ Add Manual Route](#) -- Route Selector -- [Add Saved Route](#)

There are no routes on this permit yet.

[« Back](#) [Next »](#)

A large red arrow points to the '+ Add GIS Route' button.

Find your point of origin on the map by zooming in to that location

You may opt to use the bookmark icon to zoom to the county first, then zoom further in from there using the wheel of your mouse or the +/- icons on the left side of the map - *do this slowly, as there is a lot that the map is trying to load. Going too fast may cause it to restart.*

Road Search [Report Road Network Discrepancies](#)

Route Name*

Vehicle Weight pounds

The map displays several counties in North Dakota: Williams, Mountrail, Ward, McKenzie, McLean, Dunn, Mercer, and Billings. A green route is highlighted across the map. A red arrow points to the zoom in (+) button on the left side of the map. The interface includes a scale bar (0 to 10 miles) and a 'powered by esri' logo.

« Back [Save As New](#) [Next »](#)

Once you have found your starting point, click on the **Place Waypoints** toggle switch to turn it on. If using a pc, this can be found on the left side of the map, under **Route Information**.



Route Information

Freestyle
 Sequential

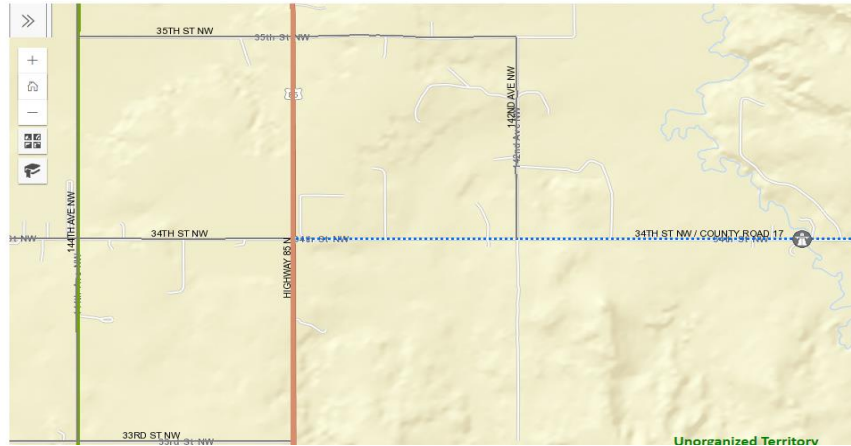
Place Waypoints
Clear First Clear Last Clear All

Place Barriers
Clear All

Draw Missing Road
Clear All

Weight Restrictions
 Include weight restricted road segments in my route
Restricted fees may apply.

Create Route Reset



Click on the starting point of your route to place your first waypoint

Route Information

Freestyle
 Sequential

Place Waypoints
Clear First Clear Last Clear All

Place Barriers
Clear All

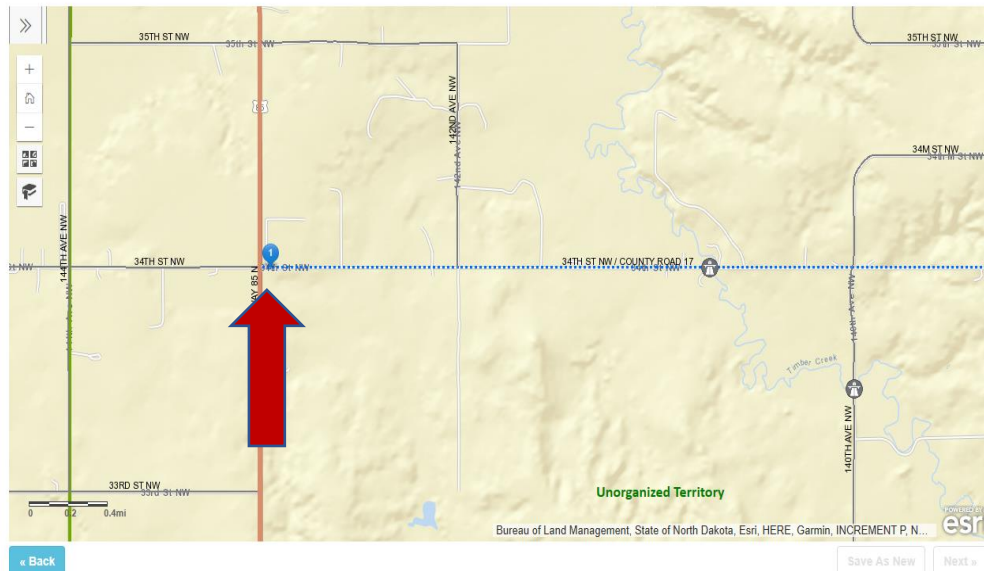
Draw Missing Road
Clear All

Weight Restrictions
 Include weight restricted road segments in my route
Restricted fees may apply.

Create Route Reset

+ Add Segment

Segment 1
0 miles



Click on your destination point to drop the last waypoint (you may opt to drop other waypoints along your route, especially if it is a longer route, to direct it the over the route you want to submit for review)

LoadPass Routing Application

Route Information

Freestyle
 Sequential

Place Waypoints
[Clear First](#) [Clear Last](#) [Clear All](#)

Place Barriers
[Clear All](#)

Draw Missing Road
[Clear All](#)

Weight Restrictions
 Include weight restricted road segments in my route
Restricted fees may apply.

[Create Route](#) [Reset](#)

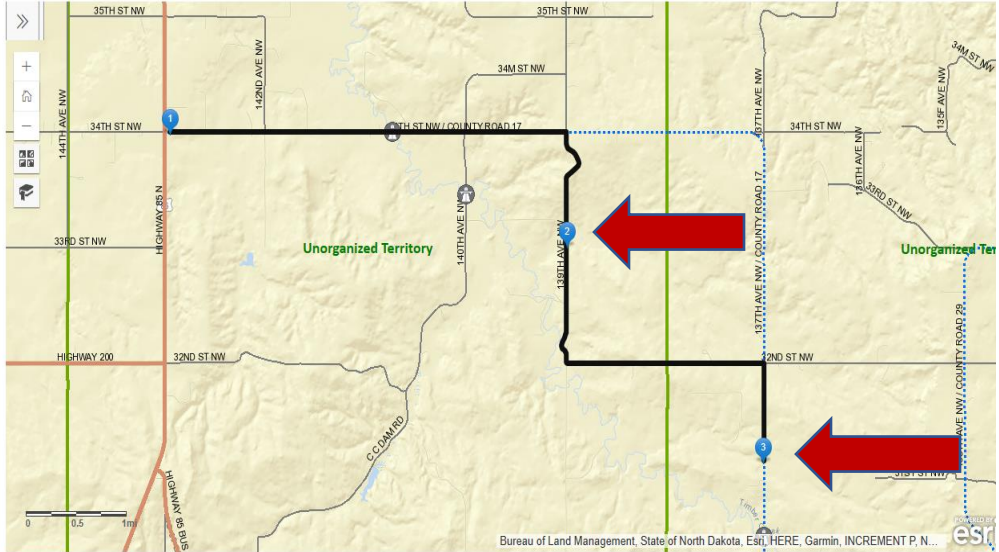
[+ Add Segment](#) ↑

Segment 1 ✕

Road Search: [Report Road Network Discrepancies](#)

Route Name*

Vehicle Weight pounds



Bureau of Land Management, State of North Dakota, Esri, HERE, Garmin, INCREMENT P. N...

[Back](#)[Save As New](#) [Next](#)

Once your route is complete, select Create Route

Then Select Next

LoadPass Routing Application

Road Search: All Counties | Road Name | Report Road Network Discrepancies

Route Name: New Route

Vehicle Weight: pounds

Route Information

- Freestyle
- Sequential
- Place Waypoints
 - Clear First
 - Clear Last
 - Clear All
- Place Barriers
 - Clear All
- Draw Missing Road
 - Clear All
- Weight Restrictions
 - Include weight restricted road segments in my route
 - Restricted fees may apply.

Create Route | **Reset**

+ Add Segment

Segment 1

Directions

8.89 miles

1. Start at 14271-14297 34th St NW, Alexander, North Dakota, 58831_1027
2. Go east on 34TH ST NW toward 142ND AVE NW
3.95 mi - 5 min
3. Turn right on 139TH AVE NW
1.08 mi - 1 min
4. Continue south on 139TH AVE NW
1.05 mi - 1 min
5. Bear left on 32ND ST NW
1.97 mi - 3 min
6. Turn right on 137TH AVE NW
0.84 mi - 1 min
7. Finish at 3101-3151 137th Ave NW, Alexander, North Dakota, 58831_1029, on the right

Save As New | Next

Your route will then, be transferred to the permit

LP Permits Routes Units Reports Account Cart 0 Notifications Help User

Route Type: GIS
Route Info

Save to Dashboard Edit Route

Route Name

From To

Junction Junction

Comments

View Restricted Road Map
View/Print Map

Save Changes

Type	County/City	Township	Road	Restriction	Miles
County	McKenzie		34TH ST NW [COUNTY ROAD 17]	By Legal Weight - 105,500 lbs	3.94
Bridges: 27-122-16.0 - 4 NORTH 2 EAST ALEXANDER					
Township	McKenzie	Unorganized Territory <i>approval not required</i>	139TH AVE NW	By Legal Weight - 105,500 lbs	2.12
Township	McKenzie	Unorganized Territory <i>approval not required</i>	32ND ST NW	By Legal Weight - 105,500 lbs	1.97
County	McKenzie		137TH AVE NW [COUNTY ROAD 17]	By Legal Weight - 105,500 lbs	0.84
					Total Miles: 8.87

Save Changes